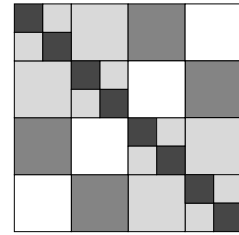



Carrie Nation Quilt


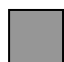
Instructions are given for both eight and (twelve) inch blocks.




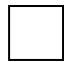
- Carrie Nation Quilt is a simple four-patch block – that is, it is made up from four smaller units.
- It is best made to finish at a size that is a multiple of 4 – i.e. 8 inches or 12 inches etc.
- You will need 4 fabrics.

Cutting

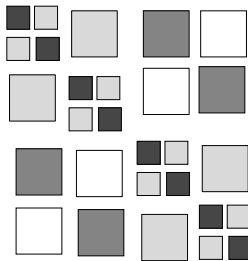
 From dark cut
8 – 1½" squares (or 2")

 From light medium cut
8 – 1½" squares (or 2")
 4 – 2½" squares (or 3½").

 From dark medium cut
4 – 2½" squares (or 3½").

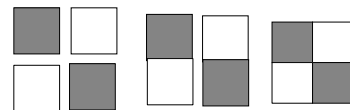
 From light cut
4 – 2½" squares (or 3½").

Making the block



Lay out block pieces as shown.

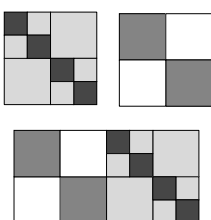
Using a ¼" seam allowance, stitch the two larger 4-patch units first



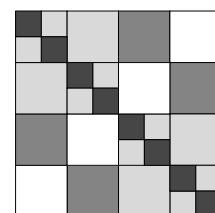
Then the four smaller ones



Stitch the smaller 4-patch units to the plain squares

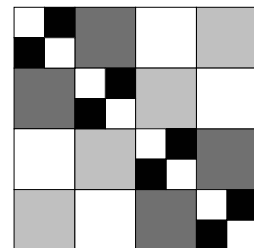
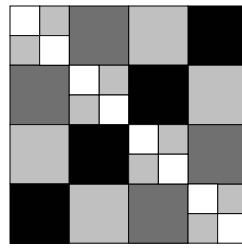
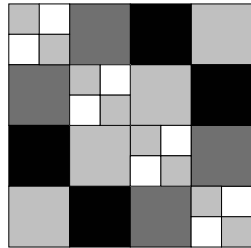
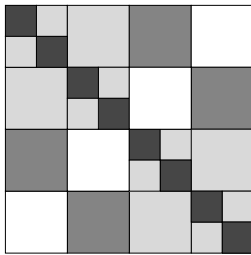


Stitch these completed units into pairs then into 4 to complete the Carrie Nation Quilt block.



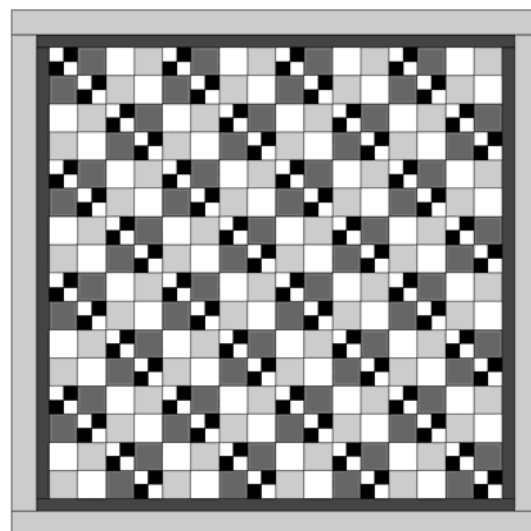
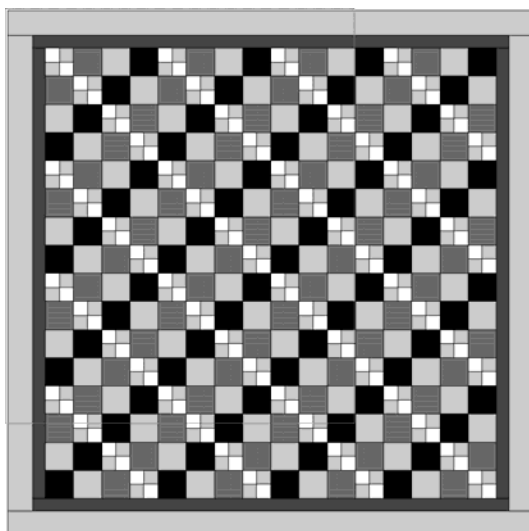
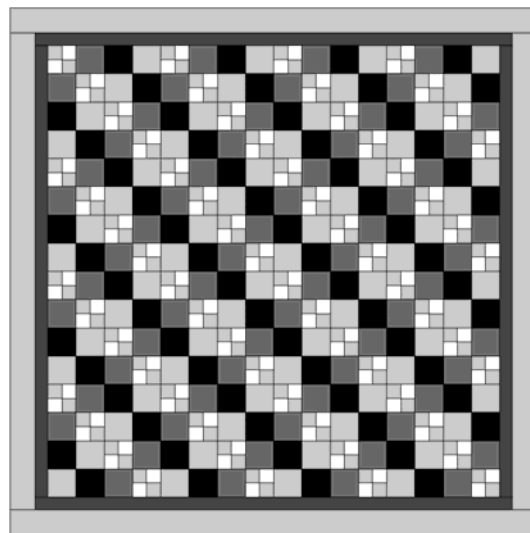
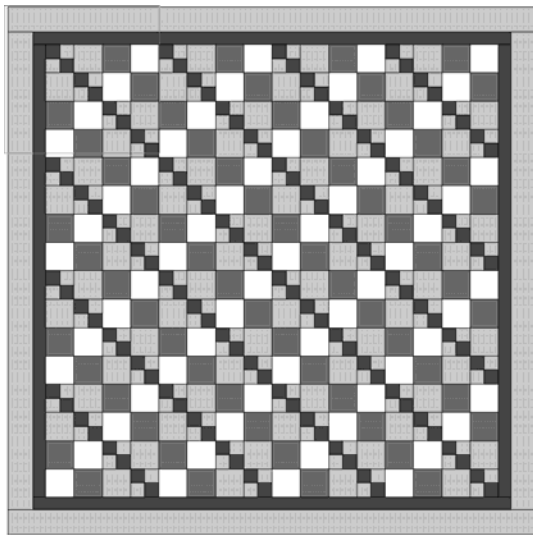
Some ideas

Change the emphasis on light and dark around in the block.

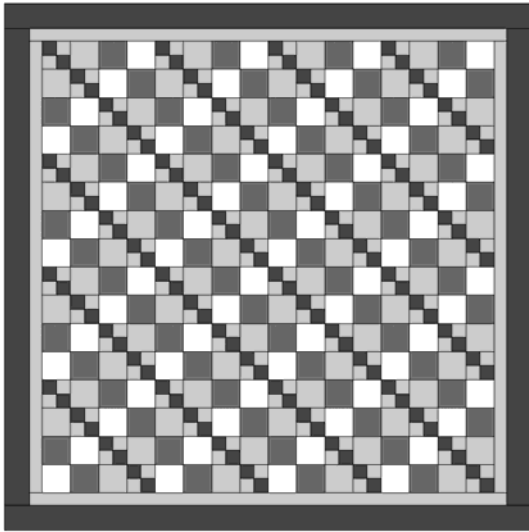


What happens when you put blocks together?

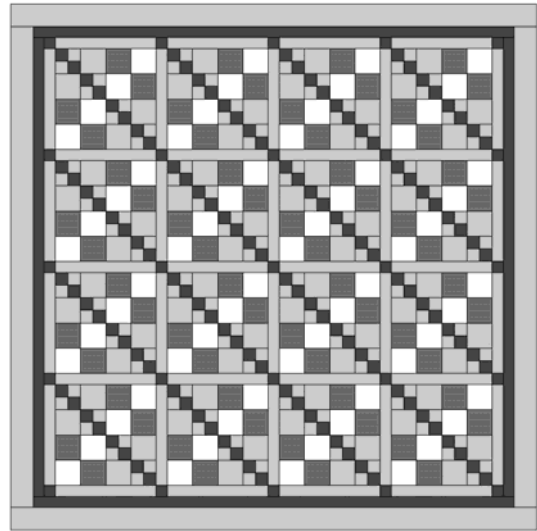
These are the four colourings above set 4 x 4 blocks with 2 plain borders.



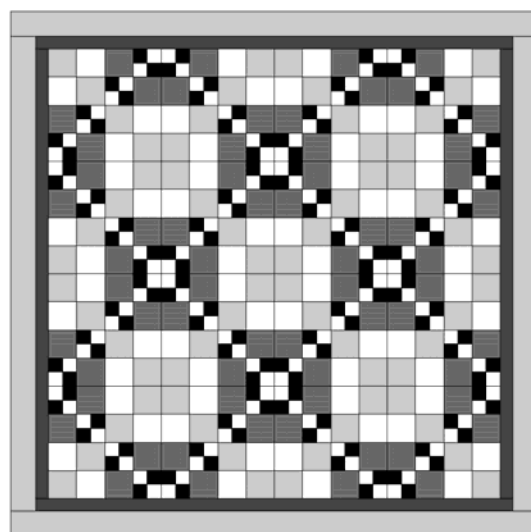
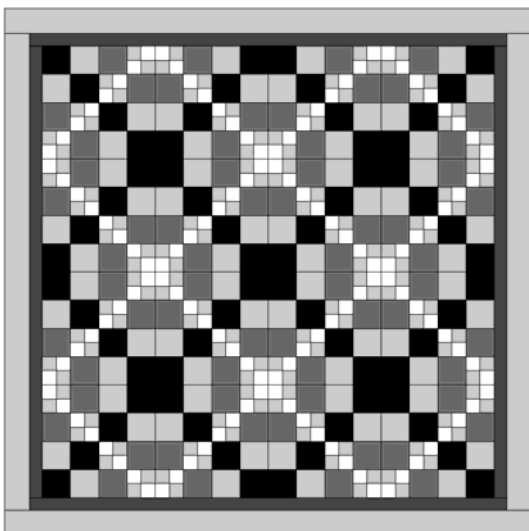
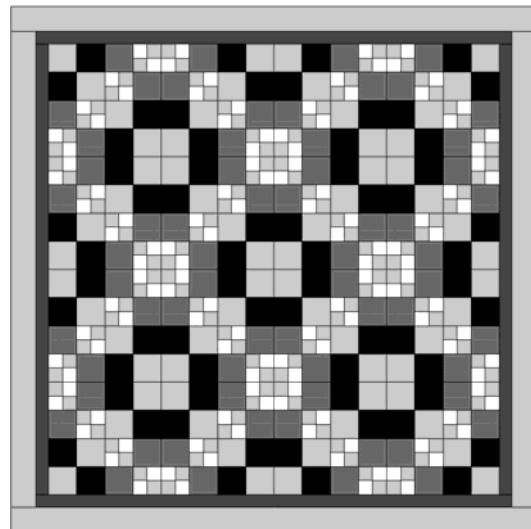
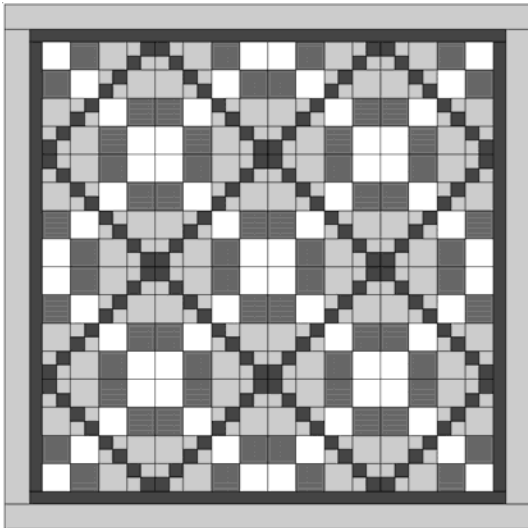
If we change the border colours –



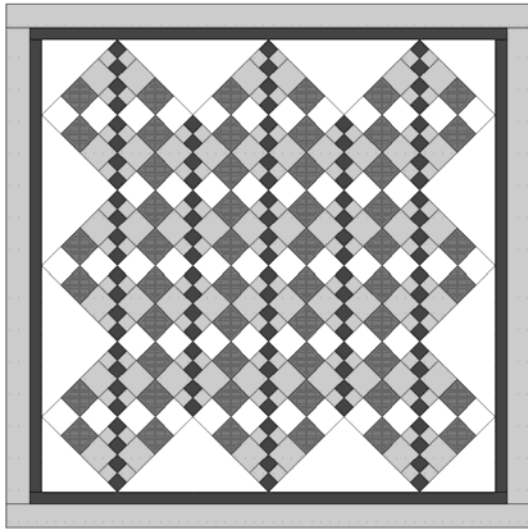
or sash the blocks –



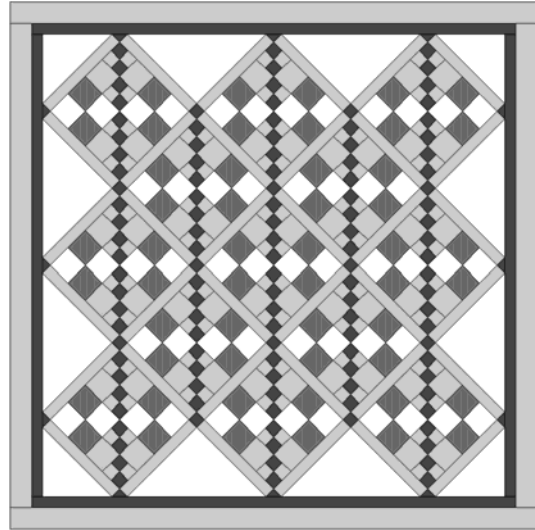
If we rotate alternate blocks –



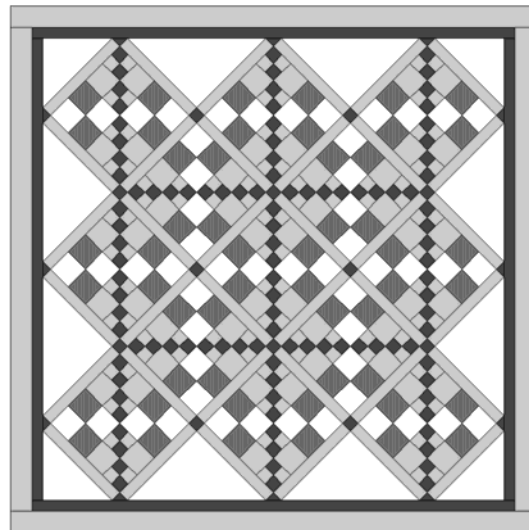
Set them on point
Without sashing –



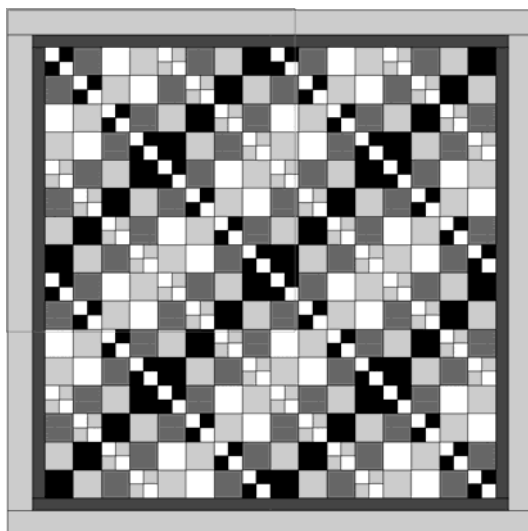
with sashing –



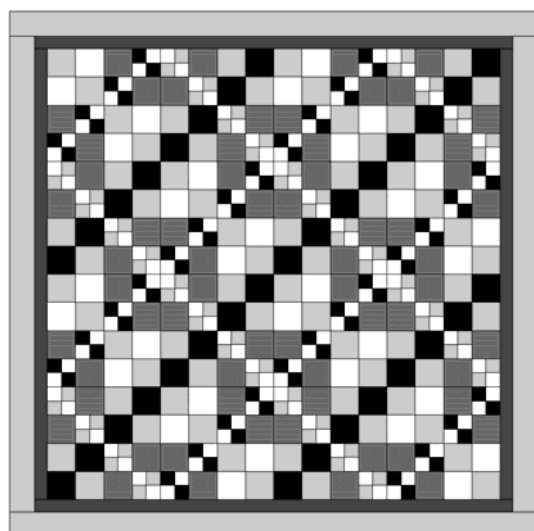
With sashing and rotated blocks –



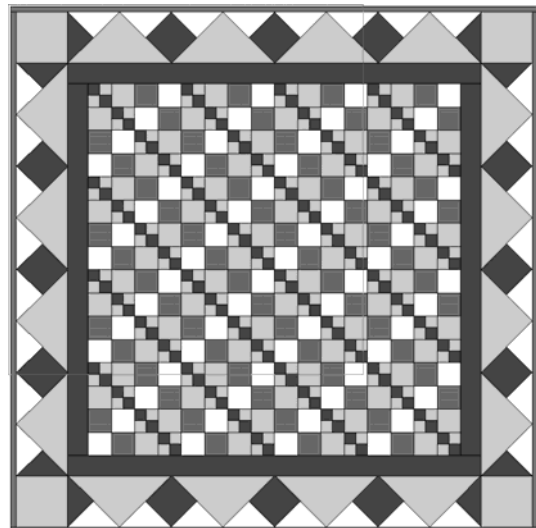
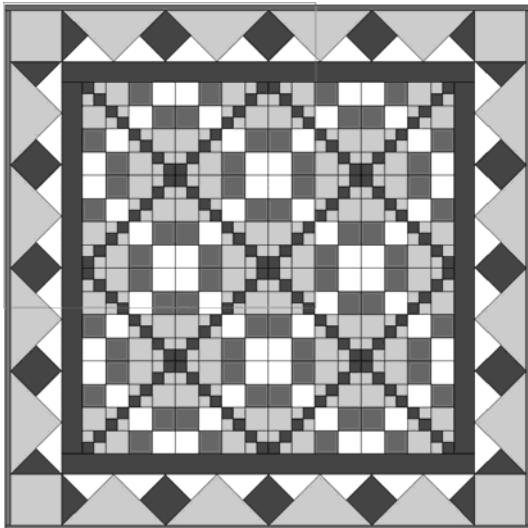
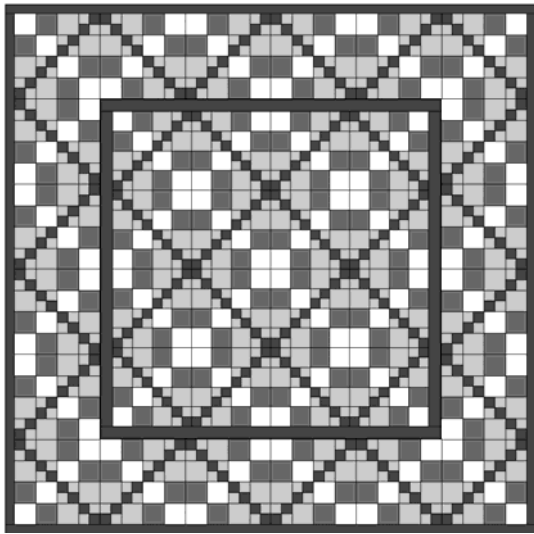
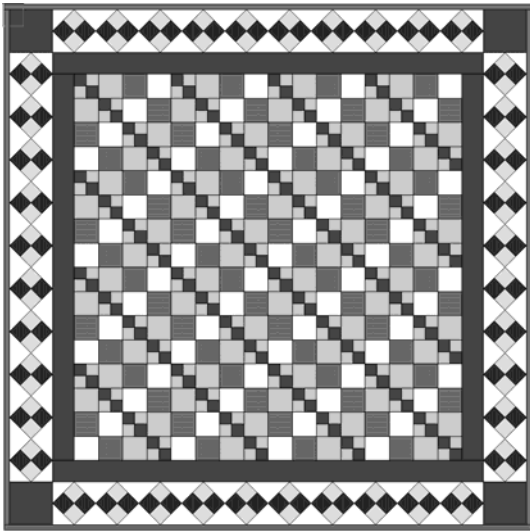
Put two colourings together –
This is from colourings 3 and 4



and then rotate alternate blocks –



Add pieced borders –



Or just save your block(s) for a sampler quilt!